



Topics

- Required Enrollment and Advisement Session
- Required Documents
- TSIA
- TSI Requirements and Testing
- Calendar and Deadlines



Required Enrollment and Advisement Session

- **Required Advisement in FHS Computer Lab 609 from 4:05-5:20pm: February 1, 2, 3, 9, 16, 17, 22, 23, 24**
- **Required Advisement in FHS Computer Lab 609 from 7:50-8:35am: February 4, 18**
- **Sign up for one Advisement session using the Google form link sent to your FHS email.**
- **Topics covered at Advisement**
- **Documents to bring: Qualifying, Official Score(s) from PSAT/SAT/ACT/EOC**
- **IMPORTANT: Must know your Social Security Number admission application.**

TSI Requirement

- The TSI is designed to measure competency in reading, writing, and mathematics.
- It is used for placement purposes.
- Student must place at college level in reading and writing for most courses.

You may be TSI Exempt:

- SAT: (Reading) EBRW 480, Math 530
- ACT Composite 23, English 19, Math 19
- PSAT: EBRW 460, Math 510

Dual Credit EOC Waiver

- STAAR EOC: minimum score of 4000 on Level II of English II, TSI waived for Reading and Writing
- STAAR EOC: minimum score of 4000 on Level II Algebra I STAAR EOC and passing grade in Algebra II course. TSI waived for Math.
- Must submit an official transcript reflecting passing Algebra II final grade.

TSI Testing Dates at FHS

- March 1st from 4 to 7 p.m. in the computer lab 609
- March 2nd from 4 to 7 p.m. in the computer lab 609
- March 3rd from 4 to 7 p.m. in the computer lab 609

- Complete the state mandated [Pre-Assessment](#)

- Sign up via FHS email with [Google form link](#)

- You may finish the test at COM in Texas City if you run out of time.

- Web-based study app: <https://accuplacerpractice.collegeboard.org/login>

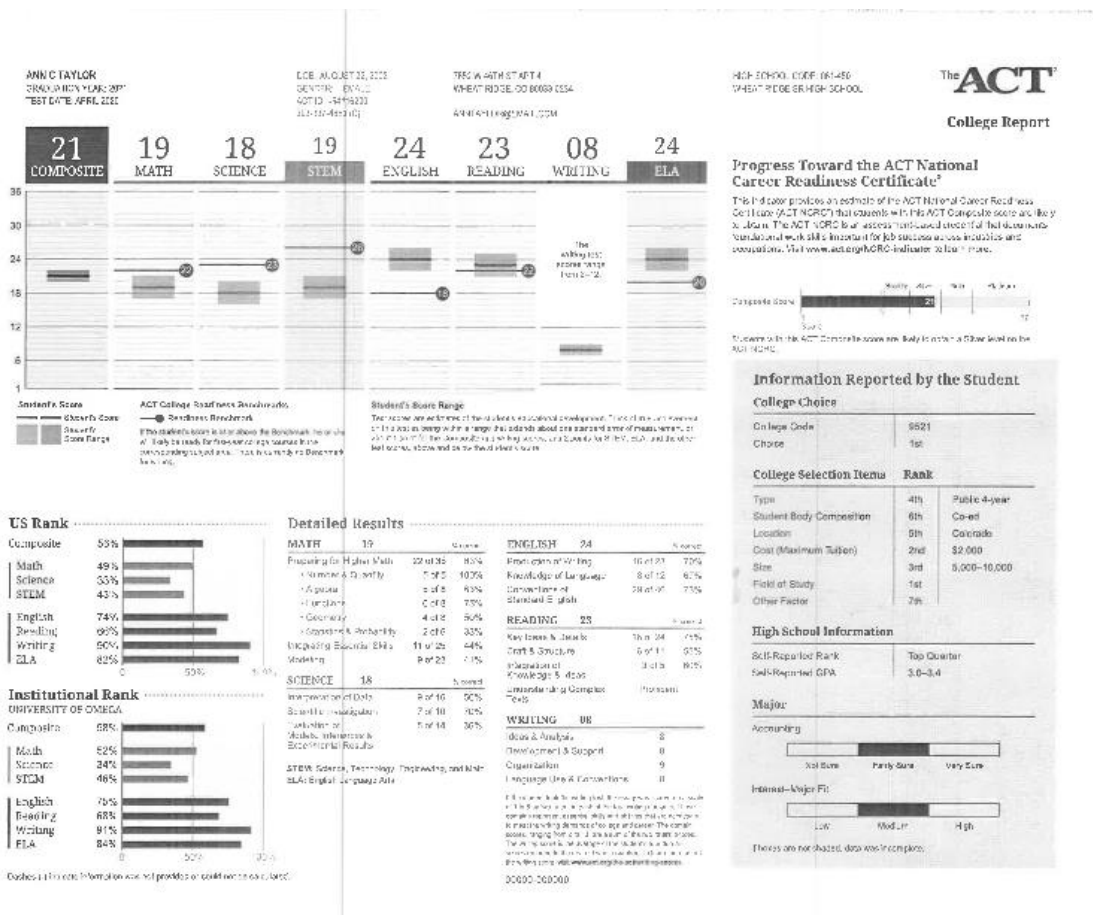
[illegible]

Ima,
this was your score
when you took
the test; it is not a
measure of how far
you can **grow!**



Students with scores like yours increased their performance from the PSAT/NMSQT® to the SAT® by 130 points after 10 or more hours of personalized practice on Khan Academy®

Sample ACT Score Report



Sample STAAR Score Report

STAAR End-of-Course (EOC) Assessments

FIRSTNAME I. LASTNAME
 Computer ID: CAMP015456 Class Group: CAUSD00000000 Report Date: 05/11/2010 GRADE 10

Your Child's Performance at a Glance

English II **U.S. History**

Apprentice
 2nd Grade
 Not Yet Proficient

Meets
 4th Grade
 Proficient

English II Test Score Summary

Subtest Scores

Subtest	Score	Grade Equivalent
Reading	100	4.0
Writing	100	4.0
Listening	100	4.0
Speaking	100	4.0
Language	100	4.0
Lexile	87th	

U.S. History Test Score Summary

Subtest Scores

Subtest	Score	Grade Equivalent
Reading	100	4.0
Writing	100	4.0
Listening	100	4.0
Speaking	100	4.0
Language	100	4.0
Lexile	78th	

Have no more than 10 minutes for your report's grade.

Lexile

Learn More about Your Child's Lexile® Level

Lexile is a measure of reading ability that is based on the number of words in a text. It is a measure of reading ability that is based on the number of words in a text. It is a measure of reading ability that is based on the number of words in a text.

You must also submit an official transcript with your Algebra II final grade

Registration at FHS

- More information on registration and payment coming soon.
Check your FHS emails for updates.
- Registration deadline July 1st

College Connections Advisor

If you have questions, email or call:

Mrs. Himes

chimes@com.edu

409-933-8697



College of the Mainland®

Testing Services

Pre-Testing Information for Dual Credit Students

Potential Dual Credit and Collegiate High School students that are not TSIA2 exempt must take the TSIA2 in order to participate in the programs. * You may not have to take the TSIA2 if you have other test scores. See the list below:

YOU MAY BE TSIA EXEMPT/WAIVED:

- SAT: (Reading)EBRW 480, Math 530
- ACT: Composite- 23 English- 19, Math- 19
- PSAT: EBRW 460, Math 510

STEPS TO RECEIVE A VOUCHER.

Step 1: Go to www.applytexas.org, fill out the 2-year college application to College of the Mainland which generates a required COM student ID in 3-5 business days.

Step 2: Complete the state mandated TSIA2 Pre-Assessment and print out/screen shot the certificate at the end. *

https://www.tsipreview.com/welcome/collegeofthe_mainland

Step 3: Take your TSIA2 Pre-Assessment certificate with your COM ID number (seven-digit number) to your High School counselor or a College Connections Advisor.

Step 4: Your voucher will be ready for you on test day.

See how you will do before your test!

<https://practice.accuplacer.org/login>

* Notice: In compliance with THECB regulations all first-time-in-college students who are not exempt via SAT or ACT must take ALL PARTS of the TSIA2. (A calculator is embedded in the Math section of the TSIA2)





College of the Mainland®

Testing Services

Post-Testing Information for Dual Credit Students

TSIA2 College Met Scores

ELAR= 945+

Or

Less than 945 and a diagnostic of 5-6

Essay = 5+

Math = 950+

Or

Less than 950 and a diagnostic of 6

Testing Fees*

Complete Test: **\$29**

Individual Sections: **\$10**

TSIA2 Retest Information for COM

- The Dual Credit program will only recognize the first 3 attempts on each section of the TSIA2.
- Testing fees will apply for each TSIA2 retest.
- Make your appointment to test in person or online at <https://www.com.edu/testing-center/tsi-assessment>.
- Vouchers cannot be used to retest on sections.

Didn't score high enough?

Perspective is a free personalized learning plan based on your TSIA2 results. Find your Locator Code on your TSIA2 Score Report. Ask a Testing Proctor or your College Connection Advisor for more details.

<https://tsia2.pearsonperspective.com/perspective/>

A valid photo ID is required for all test sessions.

Ex: State ID or DL, School ID, Passport, College Board Student ID form.

Students with disabilities can receive testing accommodations through disability services.

Go to: www.com.edu/disability-services for more information.

